

The disease course of untreated patients with thymidine kinase 2 deficiency (TK2d) aged >12 years at TK2d symptom onset: findings from the largest international TK2d dataset

United Mitochondrial Medicine Foundation (UMDF) Mitochondrial Medicine 2025 Conference; St. Louis, MO, USA; June 18–21, 2025

Michio Hirano^{1*}, Andrés Nascimento Osorio^{2,3}, Yuanjun Ma⁴, Nada Boudiaf⁴, Richard Kim⁵, Susan VanMeter⁵, Marcus Brunnert⁶, Cristina Domínguez-González^{2,7,8}

¹Department of Neurology, Columbia University Irving Medical Center, New York, NY, USA; ²Biomedical Network Research Centre on Rare Diseases (CIBERER), Instituto de Salud Carlos III, Madrid, Spain; ³Neuromuscular Unit, Sant Joan de Déu Hospital, Barcelona, Spain; ⁴UCB, Slough, UK; ⁵UCB, Morrisville, NC, USA; ⁶UCB, Monheim am Rhein, Germany; ⁷Neuromuscular Diseases Unit, Neurology Department, Hospital Universitario 12 de Octubre, Madrid, Spain; ⁸Hospital Universitario 12 de Octubre Research Institute (imas12), Madrid, Spain

*Presenting author: Michio Hirano (mh29@cumc.columbia.edu)

Introduction

- Thymidine kinase 2 deficiency (TK2d) is an autosomal recessive, mitochondrial disease associated with progressive proximal myopathy, bulbar weakness, respiratory insufficiency and premature death¹
- The prevalence (25th percentile, 75th percentile) of TK2d is estimated at 1.64 (0.5, 3.1) patients per million people worldwide,² although the true prevalence may be higher, given the underdiagnosis and misdiagnosis of this ultra-rare disease^{2,3}
- TK2d manifests as a continuous clinical spectrum with varying age of symptom onset¹
 - Patients with age of TK2d symptom onset >12 years tend to experience slower disease progression than patients with age of TK2d symptom onset ≤12 years^{1,4}
 - A common feature of TK2d in patients with age of TK2d symptom onset >12 years is respiratory involvement, with most of these patients using ventilatory support while retaining the ability to walk^{1,3}
- There are currently no approved treatments for TK2d, and management is limited to supportive care⁵
 - Research has shown that pyrimidine nucleos(t)ide therapy may stabilize disease progression in patients with age of TK2d symptom onset >12 years regarding the loss and regain of developmental motor milestones and use of ventilatory and feeding support⁶
 - Doxecitine and doxibitamine, an oral pyrimidine nucleoside therapy containing deoxycytidine and deoxythymidine, is under review by health authorities for use in TK2d
- Given the ultra-rare nature of TK2d, data on natural disease progression are scarce, particularly in those with age of TK2d symptom onset >12 years, and no TK2d-specific registries are in existence

Objective

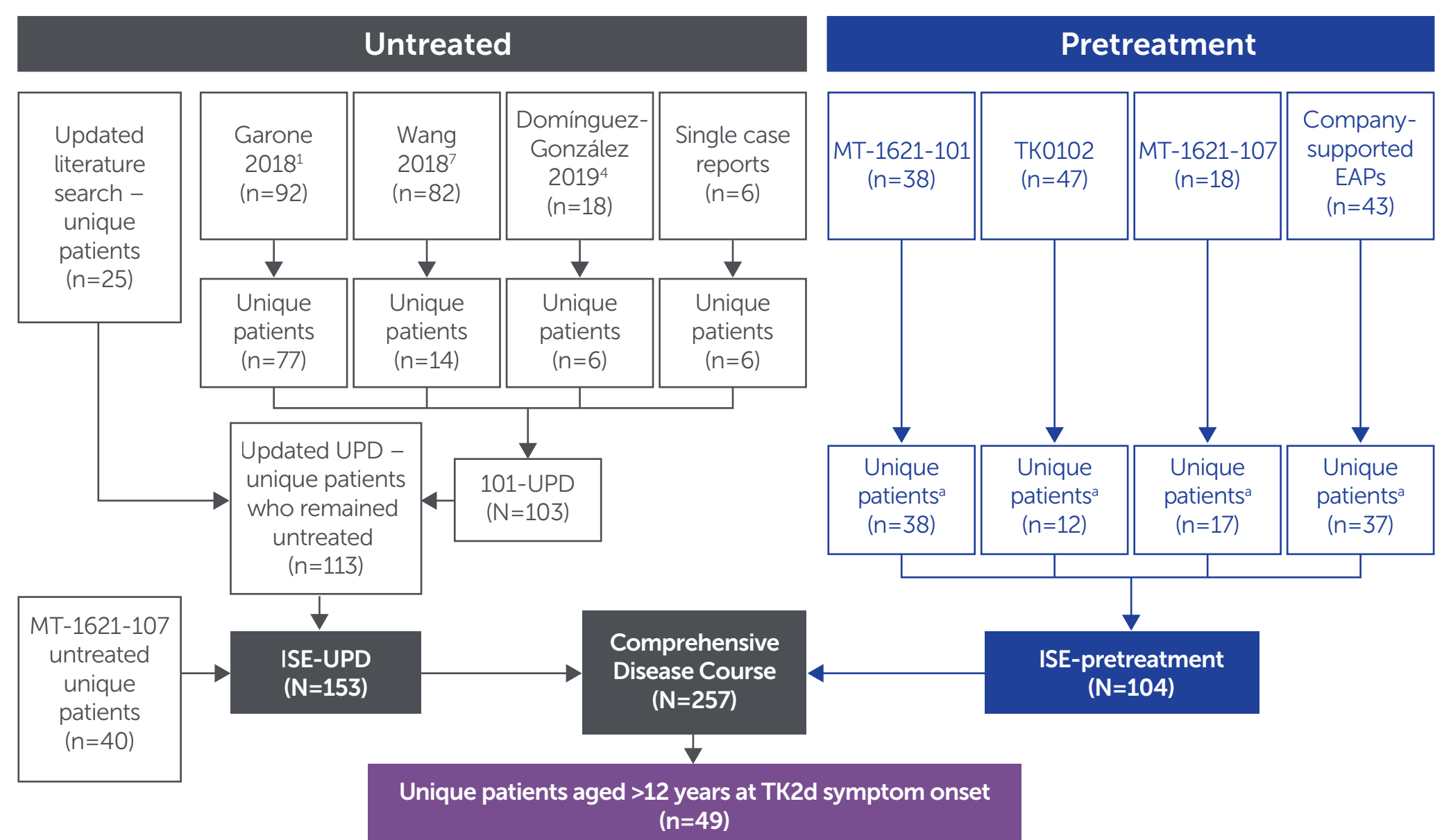
- The aim of this study is to describe the characteristics and survival of and disease progression in untreated patients with TK2d and age of symptom onset >12 years
 - Results in patients with age of TK2d symptom onset ≤12 years are reported separately (poster number 00045)

Methods

Study design

- A global Comprehensive Disease Course dataset of untreated patients with TK2d was generated from various data sources (**Figure 1**)
 - The Comprehensive Disease Course dataset comprised data from untreated patients (Integrated Summary of Efficacy [ISE]-Untreated Patient Database [UPD]) and pretreatment data from patients with TK2d later treated with pyrimidine nucleosides (ISE-pretreatment)
 - The ISE-UPD contained data from a comprehensive literature review for case studies conducted in June 2019 and updated in October 2021, as well as data from a retrospective chart review study (MT-1621-107 [NCT05017818])
 - The ISE-pretreatment dataset incorporated pretreatment data from three clinical trials (MT-1621-101 [NCT03701568]; TK0102 [NCT03845712]; MT-1621-107) and company-supported Expanded Access Programs (EAPs)
- Data were either collected prospectively (some patients from TK0102; company-supported EAPs) or retrospectively (MT-1621-101; MT-1621-107); data were cross-checked to remove duplicates to the greatest extent possible

Figure 1. Study analysis populations



*Individuals who participated in multiple studies are counted only once, although their data across studies is included.
EAP: Expanded Access Program; ISE: Integrated Summary of Efficacy; TK2d, thymidine kinase 2 deficiency; UPD, Untreated Patient Database.

Outcomes

- Outcomes included survival; attainment, loss and regain of key developmental motor milestones; ventilatory support; and enteral feeding tube (nasogastric tube, gastrostomy tube) support

Statistical analysis

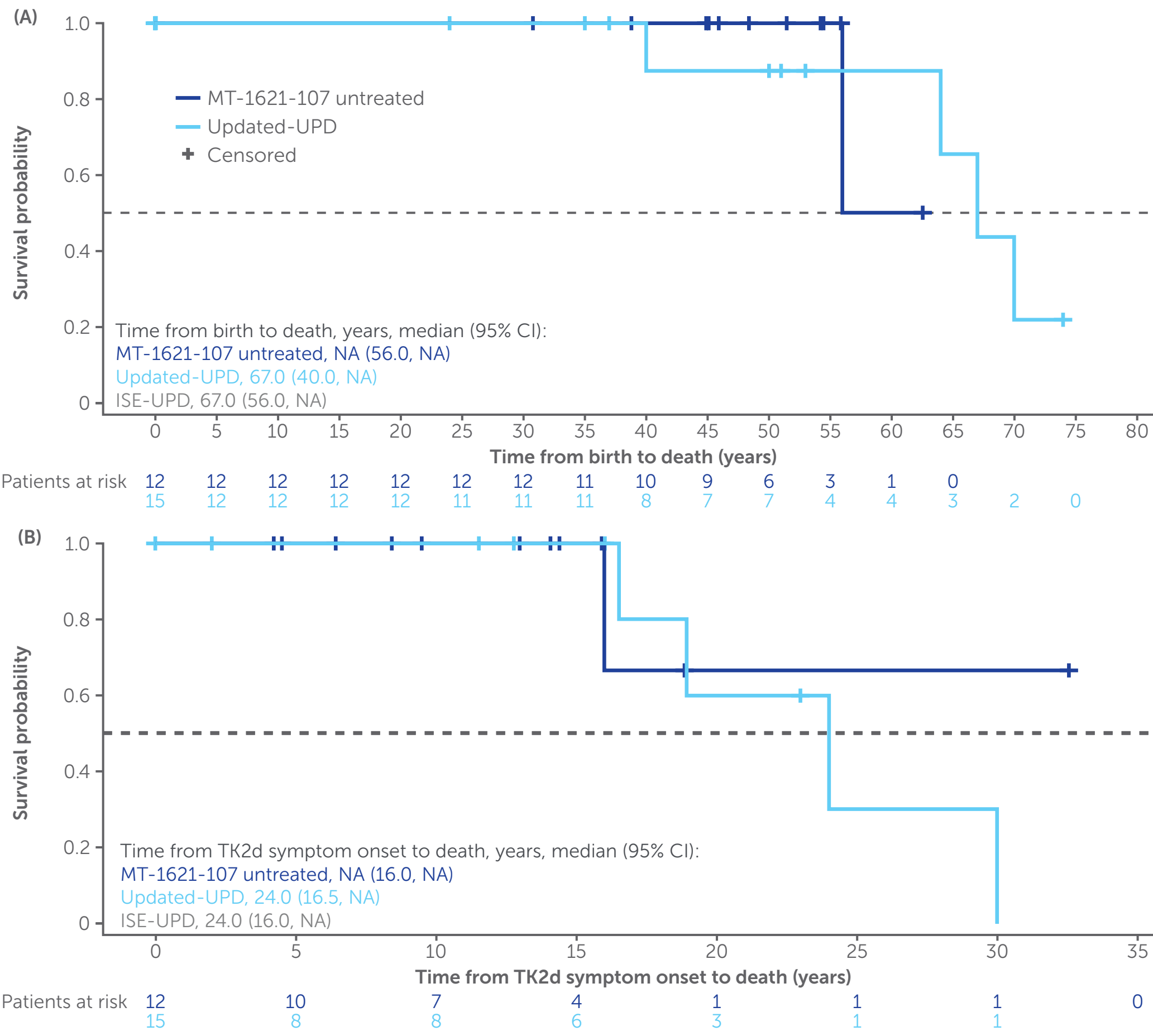
- Kaplan–Meier analysis was used to estimate the median (95% confidence interval [CI]) time from birth and from TK2d symptom onset to death, to first motor milestone loss and to first use of ventilatory and feeding support
 - Patients with no event data or missing dates were censored at time point zero
 - In time-to-event analyses, patients who did not experience the event were censored at age last known alive, treated (if applicable) or died (only for endpoints without death as the event of interest), whichever occurred first
- Missing or partial dates were imputed; no other imputation was performed

Table 1. Demographic and disease characteristics of patients with TK2d and age of symptom onset >12 years

	ISE-UPD (N=27)	ISE-pretreatment (N=22)	Comprehensive Disease Course (N=49)
Sex, n (%)			
Male	9 (33.3)	9 (40.9)	18 (36.7)
Female	16 (59.3)	13 (59.1)	29 (59.2)
Missing	2 (7.4)	0 (0)	2 (4.1)
Race,^a n (%)			
White	10 (37.0)	20 (90.9)	30 (61.2)
Other	0 (0)	2 (9.1)	2 (4.1)
Missing	17 (63.0)	0 (0)	17 (34.7)
Ethnicity, n (%)			
Hispanic or Latino	1 (3.7)	0 (0)	1 (2.0)
Not Hispanic or Latino	10 (37.0)	20 (90.9)	30 (61.2)
Missing	16 (59.3)	2 (9.1)	18 (36.7)
Geographic region of residence,^a n (%)			
Europe	12 (44.4)	16 (72.7)	28 (57.1)
Rest of world	4 (14.8)	6 (27.3)	10 (20.4)
Missing	11 (40.7)	0 (0)	11 (22.4)
Age of TK2d symptom onset, years			
Median (min, max)	40.0 (12.0, 72.0)	27.1 (12.4, 60.3)	31.0 (12.0, 72.0)
Q1, Q3	23.5, 45.0	17.8, 40.0	20.0, 40.0
Age at genetic confirmation, years			
Median (min, max)	44.9 (22.0, 75.5)	48.1 (15.0, 73.6)	46.3 (15.0, 75.5)
Q1, Q3	39.9, 53.7	29.6, 57.8	30.4, 56.8
Time from TK2d symptom onset to genetic confirmation, months			
Median (min, max)	152.8 (17.4, 358.3)	172.5 (3.5, 524.0)	159.1 (3.5, 524.0)
Q1, Q3	80.6, 216.2	119.0, 311.1	97.0, 271.4

^aOwing to the ultra-rare nature of TK2d and the small number of patients, some details relating to race and country of residence were grouped for reporting purposes to minimize risk of patient identification.
ISE: Integrated Summary of Efficacy; max, maximum; min, minimum; Q1, first quartile; Q3, third quartile; TK2d, thymidine kinase 2 deficiency; UPD, Untreated Patient Database.

Figure 2. Product-limit survival estimates of time to death from (A) birth and (B) TK2d symptom onset in the MT-1621-107 untreated and updated-UPD populations with age of TK2d symptom onset >12 years



Patients censored at time point zero (event data not collected, no dates or missing period start or end dates) or at a later point in time (last known alive). The MT-1621-107 untreated and updated-UPD datasets are subpopulations of the ISE-UPD dataset. ISE-UPD and Comprehensive Disease Course population datasets are not plotted, given that they aggregate already plotted population datasets. To avoid the introduction of immortal time bias, the ISE-pretreatment group was not included in survival analyses.
CI, confidence interval; ISE, Integrated Summary of Efficacy; NA, not available; TK2d, thymidine kinase 2 deficiency; UPD, Untreated Patient Database.

Results

Patient characteristics

- In total, 49 patients (19.1%) from the Comprehensive Disease Course dataset had an age of TK2d symptom onset >12 years and were included in this study (**Table 1**); a further 199 patients (77.4%) had an age of TK2d symptom onset ≤12 years (9 patients [3.5%] had missing data for age of TK2d symptom onset)
 - The majority of these patients were female (59.2%) and were White (61.2%); the most common geographic region of residence was Europe (57.1%)

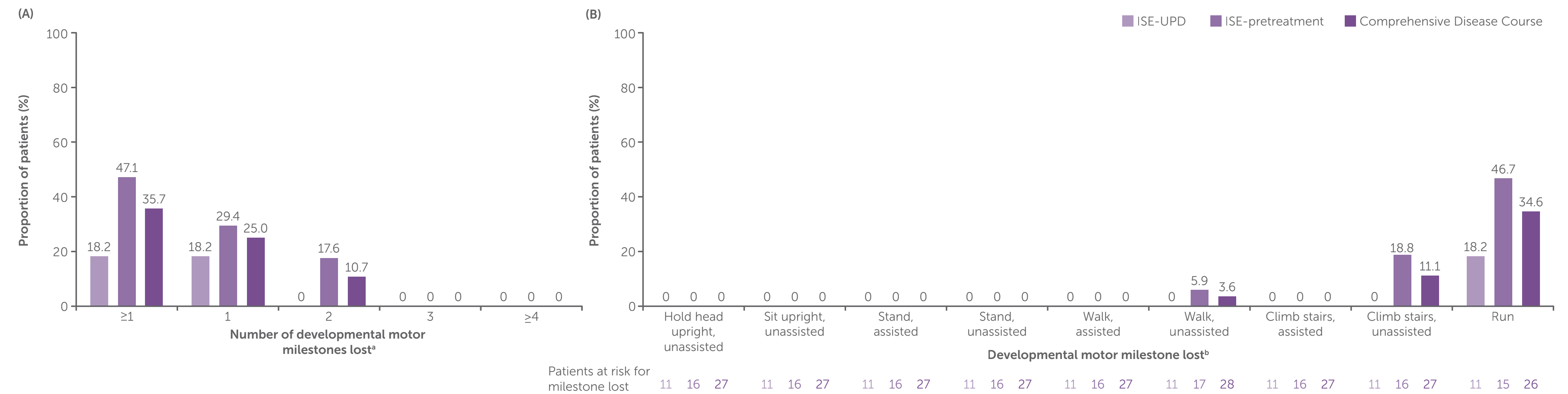
Survival

- Among patients with age of TK2d symptom onset >12 years, 6/27 patients (22.2%) from the ISE-UPD dataset died (median [first quartile, third quartile] age at death, 64.0 [56.0, 67.0] years, n=5)
- In the ISE-UPD, Kaplan–Meier estimates of median (95% CI) time from birth and from TK2d symptom onset to death were 67.0 (56.0, not estimable) years and 24.0 (16.0, not estimable) years, respectively (**Figure 2**)

Developmental motor milestones

- In the Comprehensive Disease Course dataset, 96.4% of the 28 patients with available developmental motor milestone data initially achieved at least four developmental motor milestones (all of the 11 patients in the ISE-UPD and 94.1% of the 17 patients in the ISE-pretreatment dataset), consistent with what would be expected in this population of patients with TK2d, who had >12 years without TK2d symptom onset in which to initially achieve developmental motor milestones

Figure 3. Summary of (A) number of developmental motor milestones lost and (B) individual developmental motor milestones lost in patients with age of TK2d symptom onset >12 years



^aPercentages for number of developmental motor milestones lost calculated based on number of patients initially achieving milestone (ISE-UPD, n=11; ISE-pretreatment, n=17; Comprehensive Disease Course, n=28).
ISE: Integrated Summary of Efficacy; TK2d, thymidine kinase 2 deficiency; UPD, Untreated Patient Database.

Table 2. Summary of ventilatory support for patients with TK2d and age of symptom onset >12 years

	ISE-UPD (N=27)	ISE-pretreatment (N=22)	Comprehensive Disease Course (N=49)
Ventilatory support used at any time,^a n (%)	14 (51.9)	9 (40.9)	23 (46.9)
Mode of ventilatory support (first occurrence),^{b,c} n (%)			
Invasive (tracheostomy or no tracheostomy)	0 (0)	0 (0)	0 (0)
Noninvasive (e.g. BiPAP, CPAP)	7 (50.0)	9 (100)	16 (69.6)
Missing	7 (50.0)	0 (0)	7 (30.4)
Age at first ventilatory support,^b years			
Median (min, max)	50.0 (12.0, 74.0)	49.0 (24.0, 73.6)	49.5 (12.0, 74.0)
Q1, Q3	38.0, 55.0	40.6, 55.9	38.0, 55.9
Amount of ventilatory support used (first occurrence),^b hours/day			
Median (min, max)	8.0 (7.0, 10.0)	9.0 (7.0, 24.0)	8.0 (7.0, 24.0)
Q1, Q3	8.0, 8.0	8.0, 10.0	8.0, 10.0
Duration of ventilatory support,^d days			
Median (min, max)	435.8 (26.8, 8401.0)	1138.0 (134.0, 7052.8)	954.5 (26.8, 8401.0)
Q1, Q3	301.5, 3287.5	882.0, 2426.0	325.3, 3287.5

^aFor treated patients, any time refers to the time up to treatment start. ^bIn patients with at least one record of ventilatory support. ^cPercentages are based on the number of patients with ventilatory support at any time. ^dTotal duration of all ventilatory support used per patient during the pretreatment or non-treatment phase.
BiPAP, bilevel positive airway pressure; CPAP, continuous positive airway pressure; ISE, Integrated Summary of Efficacy; max, maximum; min, minimum; Q1, first quartile; Q3, third quartile; TK2d, thymidine kinase 2 deficiency; UPD, Untreated Patient Database.

This poster was previously presented at the 2025 American Academy of Neurology (AAN) Annual Meeting, April 5–9, 2025, San Diego, CA, USA.
References: 1. Garone C, et al. *J Med Genet* 2018;55:515–21. 2. Ma Y, et al. Prevalence estimation of thymidine kinase 2 deficiency, an ultra-rare autosomal recessive mitochondrial disease [poster]. Presented at ISPOR 2023, November 12–15, 2023, Copenhagen, Denmark. 3. Berardo A, et al. *J Neuromuscul Dis* 2022;9:225–35. 4. Dominguez-González C, et al. *Orphanet J Rare Dis* 2019;14:100. 5. Wang J, et al. 2018. In: Adam MP, Feldman J, Mirzaa GM, et al., editors. GeneReviews[®] [Internet]. Seattle (WA): University of Washington, Seattle; 2018. Available from: <https://www.ncbi.nlm.nih.gov/books/NBK114628/> (Accessed February 4, 2025). 6. Scaglia F, et al. Survival and functional outcomes in patients with thymidine kinase 2 deficiency aged >12 years at symptom onset who received pyrimidine nucleosides [poster]. Presented at 2025 Muscular Dystrophy Association (MDA) Clinical & Scientific Conference, Dallas, TX, USA, March 16–19, 2025. 7. Wang J, et al. *Mol Genet Metab* 2018;124:124–30.
Acknowledgments: This study was funded by UCB. The authors acknowledge Bobby Thompson MSc(Res) of Oxford PharmaGenesis, Oxford, UK for writing and editorial assistance, which was funded by UCB, in accordance with Good Publication Practice 2022 (GPP 2022) guidelines (<https://www.ismp.org/gpp-2022>). The authors thank the patients and their caregivers, the investigators and their teams who contributed to this study, and Panagiotis Demasikos PhD and Piotr Zaremba MSc, PhD, both of UCB, for critical review and performing additional analyses.
Disclosures: Michio Hirano serves on an advisory board of UCB, has received research support, honoraria or both from Entrea Therapeutics, Modis Therapeutics (a wholly owned subsidiary of Zogenix/UCB), Precision BioSciences and Stealth BioTherapeutics; and has received grant support from the Department of Defense.

Summary and Conclusions

The Comprehensive Disease Course dataset represents the largest single source of natural history data for patients with thymidine kinase 2 deficiency (TK2d), capturing data from a substantial proportion of the known global population of patients with TK2d

In patients with TK2d who were aged >12 years at symptom onset, outcomes were broadly comparable between Integrated Summary of Efficacy (ISE)-Untreated Patient Database and ISE-pretreatment groups

- Outcomes indicated substantial disease burden, manifesting as loss of previously achieved developmental motor milestones; use of ventilatory support; and death
- Loss of a developmental motor milestone is never considered to be normal and prompts further workups and attention

Study limitations included the high proportion of missing data for some variables, owing to the retrospective nature of the study in this ultra-rare disease, and the possibility for bias introduced by the requirement for genetic confirmation of pathogenic thymidine kinase gene variants excluding patients who died before genetic testing was available

A greater understanding of the disease course of TK2d may inform strategies for effective management in clinical practice

- There is an urgent need for new treatments for TK2d to manage the high disease burden, and these natural history data could help to inform study designs by identifying key outcome measures of importance in different subpopulations of patients with TK2d

- Loss of one and two developmental motor milestones was reported in seven patients (25.0%) and three patients (10.7%), respectively, in the Comprehensive Disease Course dataset (**Figure 3A**); ability to run was the most frequently lost developmental motor milestone (**Figure 3B**)
- Regain of developmental motor milestones lost was not reported in any patients

Ventilatory and feeding support

- In the Comprehensive Disease Course dataset, ventilatory support was used by 23/49 patients (46.9%); 14/27 patients (51.9%) and 9/22 patients (40.9%) in the ISE-UPD and ISE-pretreatment datasets, respectively (**Table 2**)
 - Ventilatory support was predominantly noninvasive (69.6% of the 23 cases)
 - Out of the 23 patients who used ventilatory support, one patient (4.3%) discontinued for reasons other than death
 - Kaplan–Meier estimates for median (95% CI) time from birth and from TK2d symptom onset to first use of ventilatory support were 55.0 (49.0, 61.0) years and 14.0 (10.4, 31.0) years, respectively
- Feeding support was used by 4/22 patients (18.2%) in the ISE-pretreatment dataset (**Table 3**)
 - No patients discontinued feeding support for reasons other than death
 - In the Comprehensive Disease Course dataset, the Kaplan–Meier estimate for median (95% CI) time from birth to first use of feeding support was 63.0 (63.0, not estimable) years; median time from TK2d symptom onset to first use of feeding support was not estimable using the analysis

Table 3. Summary of feeding support for patients with TK2d and age of symptom onset >12 years

	ISE-UPD (N=27)	ISE-pretreatment (N=22)	Comprehensive Disease Course (N=49)
Feeding tube (gastrostomy or nasogastric) support used at any time,^a n (%)	0 (0)	4 (18.2)	4 (8.2)
Age at first feeding support, years			
Median (min, max)	NA	35.2 (27.0, 63.0)	35.2 (27.0, 63.0)
Q1, Q3	NA	29.2, 51.0	29.2, 51.0
Tube insertion reason for first occurrence, n (%)			
Dysphagia	NA	4 (100)	4 (100)
Other	NA	0 (0)	0 (0)
Missing	NA	0 (0)	0 (0)
Total duration on feeding support,^b days			
Median (min, max)	NA	1634.8 (102, 6912)	1634.8 (102, 6912)
Q1, Q3	NA	716.1, 4425.6	716.1, 4425.6

^aFor treated patients, any time refers to the time up to treatment start. ^bTotal duration of all feeding support received per patient during the pretreatment or non-treatment phase.
ISE: Integrated Summary of Efficacy; NA, not applicable; max, maximum; min, minimum; Q1, first quartile; Q3, third quartile; TK2d, thymidine kinase 2 deficiency; UPD, Untreated Patient Database.

(PPA W81XWH2010807), the J. Willard and Alice S. Marriott Foundation, the Muscular Dystrophy Association (577392) and the National Institutes of Health (USA NS078059 and P01 HD32062). He is on the scientific and medical advisory boards of the Barth Syndrome Foundation and the United Mitochondrial Disease Foundation, and on the Research Advisory Committee of the Muscular Dystrophy Association. Columbia University Irving Medical Center (CUIMC) has a patent for deoxynucleoside therapies for mitochondrial DNA depletion syndrome including TK2d, which is licensed to Modis Therapeutics, a wholly owned subsidiary of Zogenix/UCB; this relationship is monitored by an unconflicted external academic researcher. Dr Hirano is a coinventor of this patent. CUIMC has received royalty payments related to the development and commercialization of the technology. Dr Hirano has received shares of the royalty payments following Columbia University policies. Andrés Nascimento Osorio serves on the advisory board of UCB, has received speaker and consultancy fees from Novartis, PTC Therapeutics, Roche and Sepra Therapeutics; and is an investigator on clinical trials sponsored by Biogen, Boehringer, Italfarmaco, Roche, Sanofi, Sarepta Therapeutics and Scholar Rock (SRX), and on the TAMOND trial. Yuanjun Ma is an employee of UCB. Nada Boudiaf is an employee of Covance Laboratories, under contract to UCB. Richard Kim is a consultant under contract to UCB. Susan VanMeter is an employee of an employee of Covance Laboratories, under contract to UCB. Marcus Brunnert is an employee of UCB. Cristina Domínguez-González serves on an advisory board of UCB, has received funding from UCB to cover travel expenses to medical conferences and as a speaker, and has received funding from UCB for research projects related to TK2d.



Please use this QR code to download a PDF of this poster.